

FILTER INSERT FOR AIR FILTRATION

DESCRIPTION

- Filter keeps out dust particles
- Developed especially for Tecanno air vents
- For use in Tecanno surface-mounted and recessed air vents DN 100
- The filter ring must be combined with a filter. It provides a free filtration surface.
- Its use cannot be regulated
- Can be replaced by a volume flow regulator for air regulation
- Filter ring protected by patent, made in Germany
- Made of ABS plastic with dust filter

TECHNICAL DATA

Manufacturer	Tecanno
Type	FILTER INSERT 100
Weight (g)	23
Material filter ring	ABS plastic
Material filter	made of paper fibre with activated carbon
Colour filter ring	white
Colour filter	black
Item No.	20100
REPLACEMENT FILTER	Filter mat, round (5x)
Item No.	30100

i You will find the acoustic data and pressure reductions in the technical data sheets of the vents.

TENDER SPECIFICATION

Tecanno FILTER INSERT 100 for air filtration. The FILTER INSERT with a dust filter provides a free filtration surface. Its use cannot be regulated. Protected by patent.

Made of ABS plastic with filter mat, black.

Manufacturer: Tecanno

Type: FILTER INSERT 100

Item No.: 20100

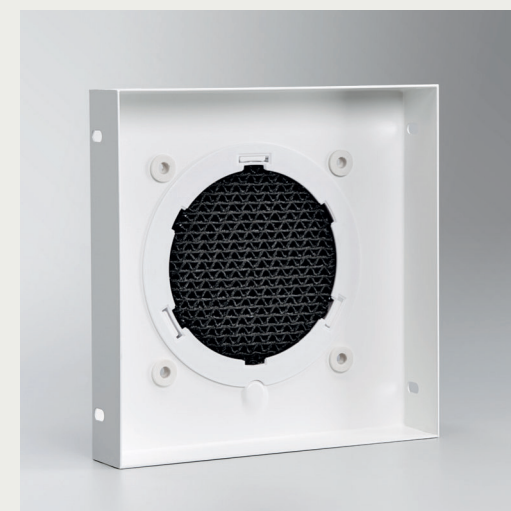
CONFIGURATION

The FILTER INSERT is inserted into the front of the Tecanno air vent's freely usable cross-section. The vent cover hides it. The FILTER INSERT must be combined with a filter. It provides a free filtration surface. Filter class ISO Coarse $\geq 30\%$ (DIN EN ISO 16890) (old G2). The filter medium consists of a number of channels for air passage. It provides high particle separation at low air resistance. Its use cannot be regulated. A VOLUME FLOW REGULATOR can replace the FILTER INSERT for infinitely variable air regulation.

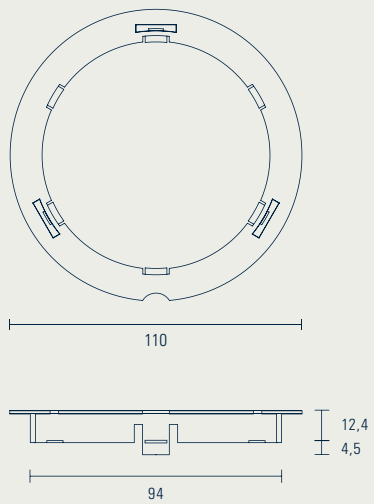
ORDERING INFORMATION

Accessory: FILTER INSERT (Item No. 20100)

The accessory consists of a filter ring and a filter, including a replacement filter. The filter ring can be reused with a REPLACEMENT FILTER (Item No. 30100).



E.g.: Vent ONE and Vent ONE PLUS with FILTER INSERT



All dimensions in mm.